

Decree No. (14) of 2023
Concerning the Location and Boundaries of the Jebel Ali Port¹

We, Mohammed bin Rashid Al Maktoum, Ruler of Dubai,

After perusal of:

Law No. (4) of 1979 Concerning the Jebel Ali Port;

Law No. (1) of 2001 Establishing the Ports, Customs, and Free Zone Corporation and its amendments;

Law No. (17) of 2005 Establishing the Roads and Transport Authority and its amendments; and

Law No. (4) of 2023 Concerning the Dubai Ports Authority (the "DPA"),

Do hereby issue this Decree.

Jebel Ali Port Location and Boundaries
Article (1)

Notwithstanding the provisions of any other legislation, the location and boundaries of the Jebel Ali Port are hereby defined by the map and geographic coordinates attached to this Decree. The port encompasses the waters and facilities within and between the Eastern Breakwaters and Western Breakwaters, including all shipyards and other yards constituting the inner and outer harbour.

Mandatory Maritime Pilotage
Article (2)

- a. Ships will be subject to mandatory pilotage within the Jebel Ali Port, whose boundaries and location are specified in Article (1) hereof. The DPA may exempt ships from mandatory pilotage in certain ship berthing areas, whose names and

©2023 The Supreme Legislation Committee in the Emirate of Dubai

¹Every effort has been made to produce an accurate and complete English version of this legislation. However, for the purpose of its interpretation and application, reference must be made to the original Arabic text. In case of conflict, the Arabic text will prevail.

Decree No. (14) of 2023 Concerning the Location and Boundaries of Jebel Ali Port

coordinates are to be determined by the relevant resolution of the Executive Director of the DPA.

- b. The DPA may exempt from mandatory pilotage ship masters who regularly frequent the Jebel Ali Port, ship operators who are licensed by the DPA, or any ship for reasons related to its size.

Group Maritime Transport Route Article (3)

- a. The DPA will, in coordination with the Roads and Transport Authority, designate a maritime navigation route for Group Maritime Transport within the Jebel Ali Port boundaries specified in Article (1) of this Decree.
- b. The DPA may, in coordination with the Roads and Transport Authority, modify the maritime navigation route designated in accordance with paragraph (a) of this Article in the event of introducing any updates or modifications to the Jebel Ali Port plan.

Repeals Article (4)

Any provision in the above-mentioned Law No. (4) of 1979, or in any other legislation, is hereby repealed to the extent that it contradicts the provisions of this Decree.

Commencement and Publication Article (5)

This Decree comes into force on the day on which it is issued, and will be published in the Official Gazette.

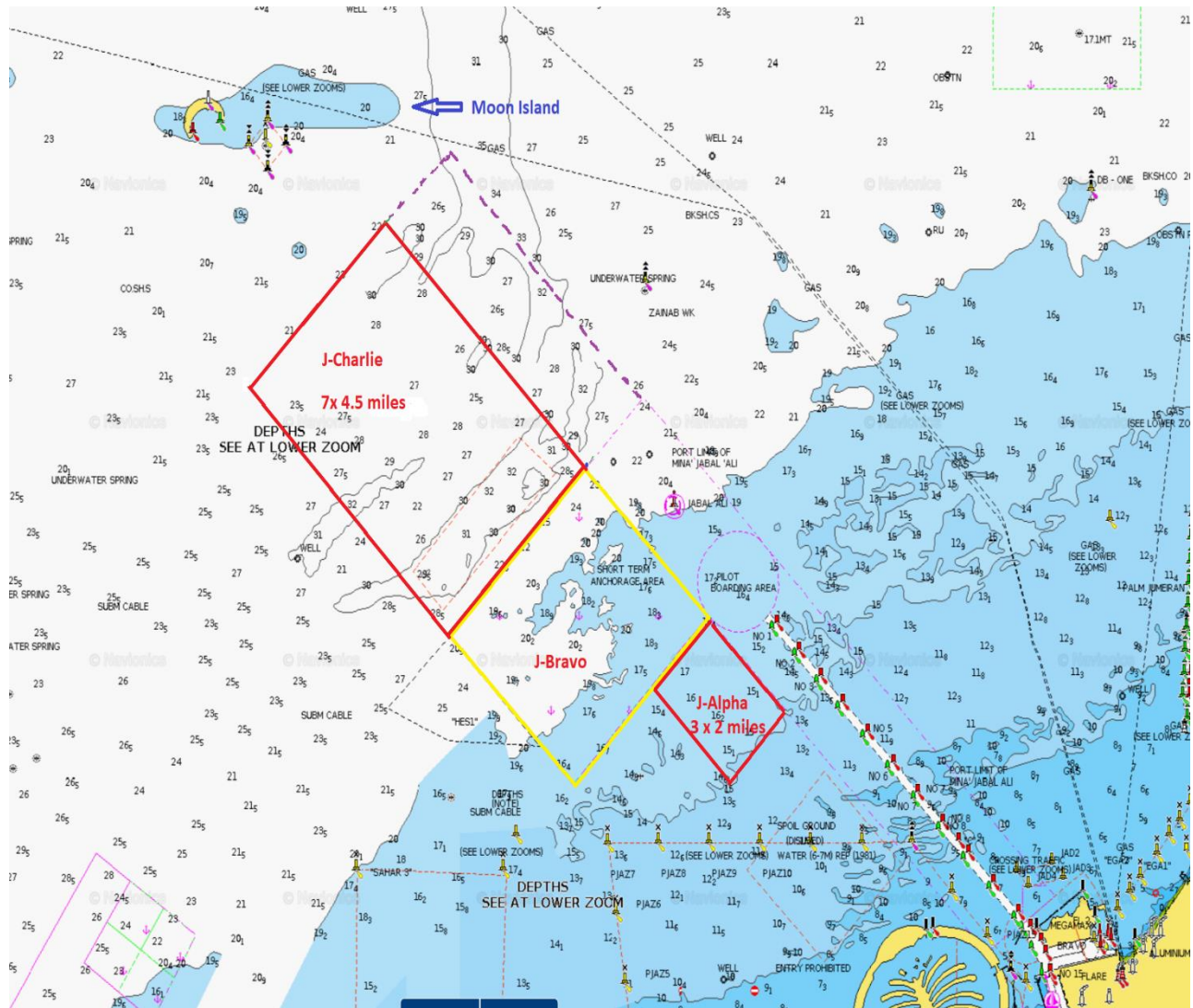
Mohammed bin Rashid Al Maktoum
Ruler of Dubai

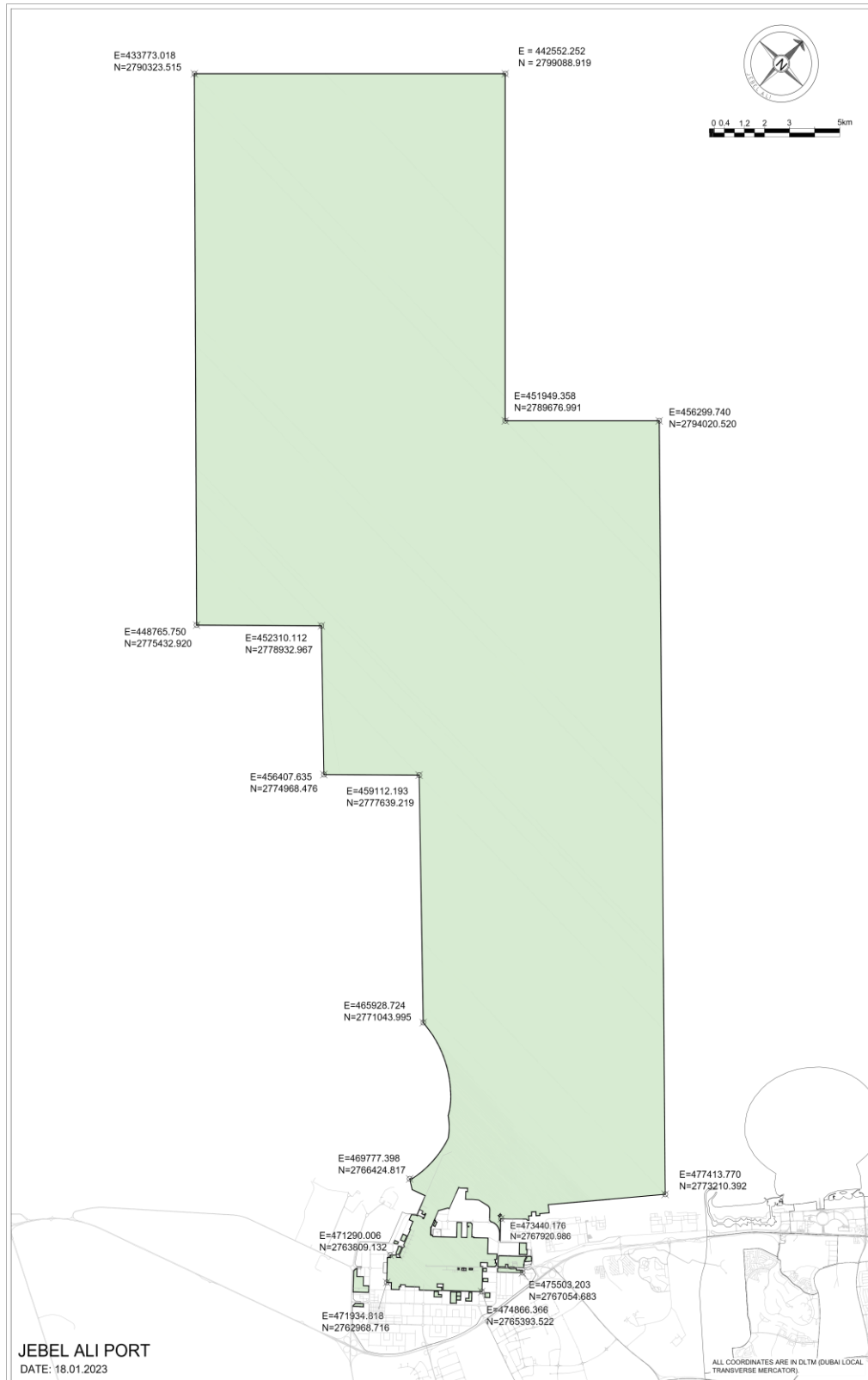
Issued in Dubai on 6 April 2023
Corresponding to 15 Ramadan 1444 A.H.

Geographical Coordinates

SN	Latitude	Longitude
1	25° 17,827'N	54° 45,773'E
2	25° 13,058'N	54° 40,569'E
3	25° 5,028'N	54° 49,528'E
4	25° 6,930'N	54° 51,629'E
5	25° 4,791'N	54° 54,074'E
6	25° 6,242'N	54° 55,678'E
7	25° 2,680'N	54° 59,742'E
8	25° 0,183'N	55° 02,037'E
9	24° 58,768'N	55° 02,939'E
10	24° 58,313'N	55° 03,323'E
11	24° 59,630'N	55° 05,063'E
12	25° 0,530'N	55° 05,439'E
13	25° 0,997'N	55° 04,212'E
14	25° 03,866'N	55° 06,569'E
15	25° 15,109'N	54° 53,973'E
16	25° 12,749'N	54° 51,392'E

Jebel Ali Port Map





Decree No. (14) of 2023 Concerning the Location and Boundaries of Jebel Ali Port